

CASE STUDY:

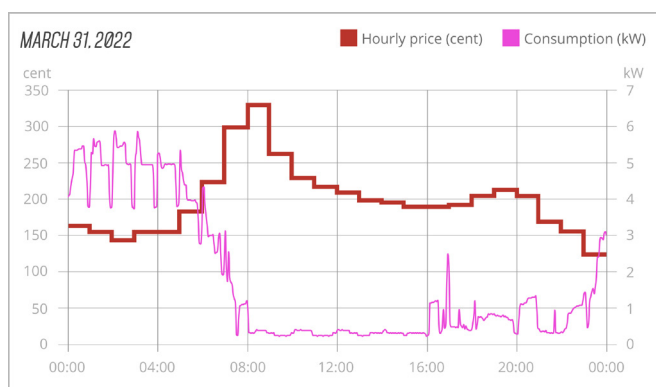
NGENIC TUNE WITH SPOT PRICE ADAPTION

 **HOUSE 2**
UPPSALA, SWEDEN

Living area	131 square metres
Year of construction	2019
Heating	Exhaust air heat pump. Underfloor heating on ground floor and toilet upstairs. Water-based radiators in other rooms upstairs.
Annual consumption	9160 kWh (March 2021 - February 2022)
Main fuse	16 A
Electricity subscription	Vattenfall flat rate tariff
Ngenic Tune	Installed 2020
Residents	Family with 2 children (ages 7 and 9)

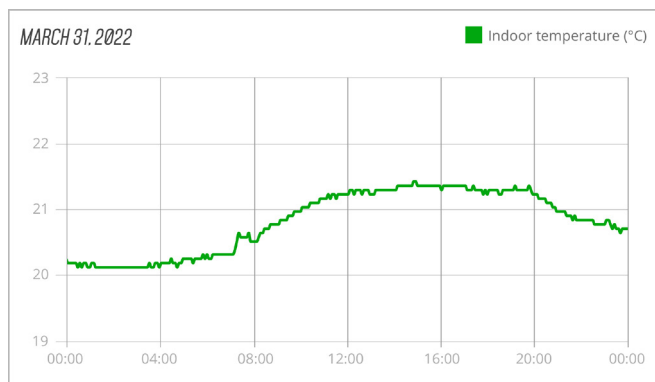
SPOT PRICE ADAPTION

The family has had electricity price adaption since 1 January 2022 and switched to an hourly rate plan 1 February 2022. Below is a typical control in March:



TEMPERATURE VARIATION WITH SPOT PRICE ADAPTION

The temperature variations have stayed within the comfort limits, same 24-hour period as the control above.



RESULTS

Month	Consumption	Hourly rate	Comparison price	Saved %	Saved SEK
Jan 2022	1213 kWh	88,11 cents*	116,51 cents	25 %	SEK 431
Feb 2022	1017 kWh	62,95 cents	88,35 cents	29 %	SEK 322
March 2022	965 kWh	125,21 cents	143,64 cents	12 %	SEK 222

*January is charged according to a variable electricity price but calculated according to what an hourly rate would have resulted in. The comparison price is a variable electricity price from the same electrical company during the month. Transfer fees, taxes, VAT and fixed fees are added to the price. VAT is also included in the total savings.

ENERGY SAVINGS

Energy savings from installing Tune were 8.3% for 2021.

REFLECTIONS

The family chose Ngenic Tune because they wanted to have better comfort and for their boiler to be more efficient. The family also appreciates being able to control and monitor the boiler with the app. Now that the family has switched to an hourly rate plan, they realize how much they can save too!