

Single-phase electricity meter

OTUS 1



Application

Multipurpose smart electricity meter for single-phase two-wire networks. Enables direct measurement of active and reactive energy and of network parameters. It is ideal for municipal customers of all tariff groups. Provides full compatibility with smart systems

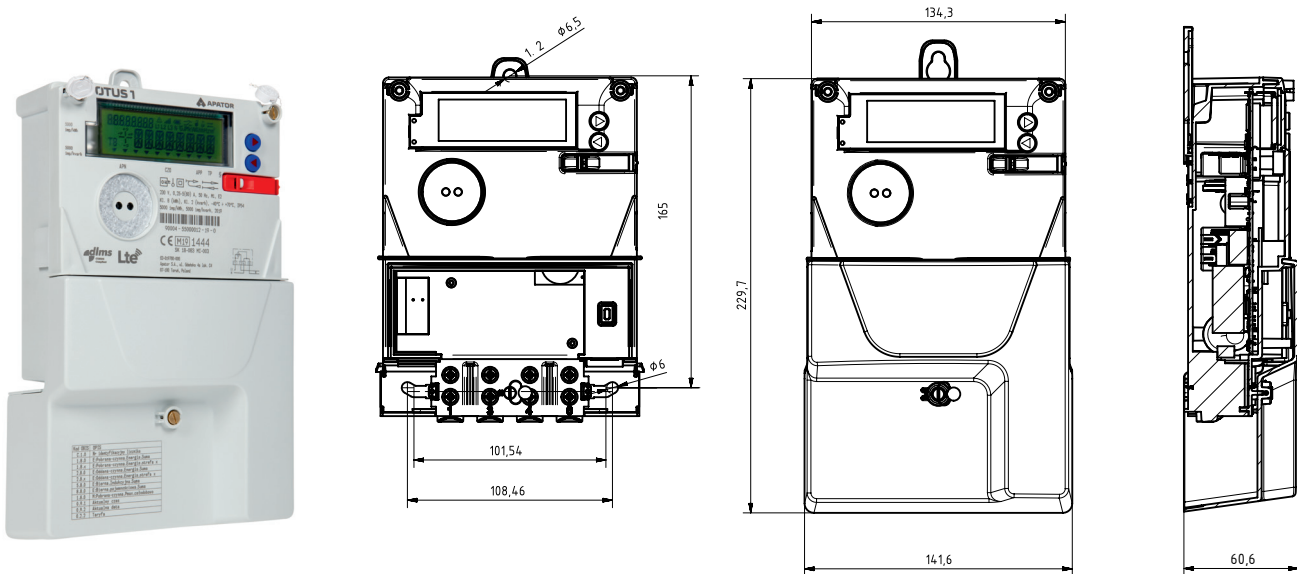
Features

- Bidirectional measurement of active energy
- Four-quadrant measurement of reactive energy
- Four tariff metering
- Measurement of voltage, current, instantaneous power and maximum power
- Recording measured data in the: 15-minute load profile, 10-minute voltage and phase current profile, daily profile, and monthly billing periods
- Integrated disconnecter
- Local communication via infrared port (EN-62056-21), DLMS/COSEM protocol
- Remote access via interchangeable GSM based communication module located under the terminal cover, RS485 port or P1 user interface on RJ12 connectors (optional), built in Wireless M-Bus (EN 13757) on 868 MHz (optional)
- Authorized and encrypted communication by DLMS/COSEM protocol
- Power limiter controlled locally or remotely via DSM/DSR signals
- Remote non-legally relevant firmware update
- Segment LCD display allowing for the display of text messages
- Immunity to external magnetic field
- Neutral current measurement, balancing phase current and neutral current
- Event and alarm handling
- Relay contact output 240 V AC / 5 A (optional) or SO impulse output (optional)

Code	Value
C.1.0	Identifikator licencije
1.0.0	Poluprivremena Energija Suma
1.0.1	Poluprivremena Energija Suma x
1.0.2	Odobrena privremena Energija Suma
1.0.3	Odobrena privremena Energija Suma x
1.0.4	Privremena Isključena Suma
1.0.5	Privremena Isključena Suma x
1.0.6	Privremena Privremena Suma
1.0.7	Privremena Privremena Suma x
1.0.8	Privremena Privremena Suma
1.0.9	Privremena Privremena Suma x
1.0.10	Privremena Privremena Suma
1.0.11	Privremena Privremena Suma x
1.0.12	Privremena Privremena Suma
1.0.13	Privremena Privremena Suma x
1.0.14	Privremena Privremena Suma
1.0.15	Privremena Privremena Suma x
1.0.16	Privremena Privremena Suma
1.0.17	Privremena Privremena Suma x
1.0.18	Privremena Privremena Suma
1.0.19	Privremena Privremena Suma x
1.0.20	Privremena Privremena Suma
1.0.21	Privremena Privremena Suma x
1.0.22	Privremena Privremena Suma
1.0.23	Privremena Privremena Suma x
1.0.24	Privremena Privremena Suma
1.0.25	Privremena Privremena Suma x
1.0.26	Privremena Privremena Suma
1.0.27	Privremena Privremena Suma x
1.0.28	Privremena Privremena Suma
1.0.29	Privremena Privremena Suma x
1.0.30	Privremena Privremena Suma
1.0.31	Privremena Privremena Suma x
1.0.32	Privremena Privremena Suma
1.0.33	Privremena Privremena Suma x
1.0.34	Privremena Privremena Suma
1.0.35	Privremena Privremena Suma x
1.0.36	Privremena Privremena Suma
1.0.37	Privremena Privremena Suma x
1.0.38	Privremena Privremena Suma
1.0.39	Privremena Privremena Suma x
1.0.40	Privremena Privremena Suma
1.0.41	Privremena Privremena Suma x
1.0.42	Privremena Privremena Suma
1.0.43	Privremena Privremena Suma x
1.0.44	Privremena Privremena Suma
1.0.45	Privremena Privremena Suma x
1.0.46	Privremena Privremena Suma
1.0.47	Privremena Privremena Suma x
1.0.48	Privremena Privremena Suma
1.0.49	Privremena Privremena Suma x
1.0.50	Privremena Privremena Suma
1.0.51	Privremena Privremena Suma x
1.0.52	Privremena Privremena Suma
1.0.53	Privremena Privremena Suma x
1.0.54	Privremena Privremena Suma
1.0.55	Privremena Privremena Suma x
1.0.56	Privremena Privremena Suma
1.0.57	Privremena Privremena Suma x
1.0.58	Privremena Privremena Suma
1.0.59	Privremena Privremena Suma x
1.0.60	Privremena Privremena Suma
1.0.61	Privremena Privremena Suma x
1.0.62	Privremena Privremena Suma
1.0.63	Privremena Privremena Suma x
1.0.64	Privremena Privremena Suma
1.0.65	Privremena Privremena Suma x
1.0.66	Privremena Privremena Suma
1.0.67	Privremena Privremena Suma x
1.0.68	Privremena Privremena Suma
1.0.69	Privremena Privremena Suma x
1.0.70	Privremena Privremena Suma
1.0.71	Privremena Privremena Suma x
1.0.72	Privremena Privremena Suma
1.0.73	Privremena Privremena Suma x
1.0.74	Privremena Privremena Suma
1.0.75	Privremena Privremena Suma x
1.0.76	Privremena Privremena Suma
1.0.77	Privremena Privremena Suma x
1.0.78	Privremena Privremena Suma
1.0.79	Privremena Privremena Suma x
1.0.80	Privremena Privremena Suma
1.0.81	Privremena Privremena Suma x
1.0.82	Privremena Privremena Suma
1.0.83	Privremena Privremena Suma x
1.0.84	Privremena Privremena Suma
1.0.85	Privremena Privremena Suma x
1.0.86	Privremena Privremena Suma
1.0.87	Privremena Privremena Suma x
1.0.88	Privremena Privremena Suma
1.0.89	Privremena Privremena Suma x
1.0.90	Privremena Privremena Suma
1.0.91	Privremena Privremena Suma x
1.0.92	Privremena Privremena Suma
1.0.93	Privremena Privremena Suma x
1.0.94	Privremena Privremena Suma
1.0.95	Privremena Privremena Suma x
1.0.96	Privremena Privremena Suma
1.0.97	Privremena Privremena Suma x
1.0.98	Privremena Privremena Suma
1.0.99	Privremena Privremena Suma x
1.0.100	Privremena Privremena Suma

Basic technical data

Model	OTUS 1	
Connection method	direct	
Rated voltage U_n	[V]	230
Reference current I_{ref}	[A]	5
Maximum current I_{max}	[A]	40
Frequency	[Hz]	50
Accuracy of active energy measurement	acc. EN 50470-3	B
Accuracy of reactive energy measurement	acc. EN 62053-23	2
Insulation	[kV]	4 (AC 50 Hz), 6 (surge 1,2/50 μ s)
Pulse rate	[imp/kWh]	5000
RTC	Internal, accuracy better than 0.5s/24h at 23°C	
Communication	GSM based communication module located under the terminal cover, RS485 port (optional), built in Wireless M-Bus (EN 13757) on 868MHz (optional)	
Display	LCD, display area: 65 x 20 mm	
Operating temperature	-40 to +70 °C	
Casing	II protection class	
Ingress protection rating	acc. PN-EN 60529	IP54
Standards	EN 50470-1 EN 50470-3	



Uppgifterna gäller vid datumet för utfärdandet av detta dokument.
Tillverkaren har rätt att ändra och förbättra produkterna utan föregående meddelande.
Denna publikation är endast avsedd för informationsändamål.



KONTAKTUPPGIFTER

Postadress:
Ngenic Sverige AB
Kungsgatan 41
753 21 Uppsala

sales@ngenic.se
018 - 472 18 18
www.ngenic.se



Apator SA
Apator S.A. Centrum, Ostaszewo 57C, 87-148 Łysomice, PL
tel. +48 56 61 91 111, fax +48 56 61 91 295
e-mail: apator@apator.com
www.apator.com