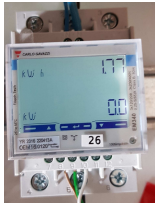


Gavazzi EM340 address change

1. Main menu



2. Press Enter and hold for about 2 sec.



3. Press Enter and hold for about 2 sec
Repeat 4 times to pass through PASS



4. Press the extreme key and find the Address menu



3. Press Enter and hold for about 2 sec to enter the Address edition
(number consists of 3 digits - 000)



4. Use the up / down arrows to set the desired number.
5. Press Enter and hold about 2 sec to move to the next item.
6. Repeat the procedure for the next digits of the address being set.
7. After setting the last position, press Enter and hold for about 2 sec to confirm the entered number.
8. Use the up / down arrows to find the END menu and then press Enter for 2 sec.

